



Thirst Quencher

FK series



Benefit from our strengths

A series with variety for all your cold drinks

The FK series offers traditional column vending machines for cold drinks in cans and bottles from 0.2 to 2.0 litres. Behind all this is our tried and tested modular build system. To suit your requirements – both in depth and design – there are different machine sizes, with variations of door and varying chute widths, most of which can be adapted to suit all drink requirements and locations.

The flexible chute system combines narrow and standard chutes to offer the optimum variety of drinks. Depending on machine type different chute depths are available. Many bottles and cans can be loaded one behind the other to make efficient use of the cooling area, to give maximum capacity and to optimize product temperature. Product delivery is fast, secure and reliable.

The single chute system also enables every column to be removed by hand and transported separately. Ease of handling and accessibility enables products to be rotated to suit market trends.

Modular build, easy to service, intelligent technology and attractive design: There are many reasons for purchasing an FK-vendor. Customer turnover being the main one. Sielaff: Stands for simply refreshingly successful.

High capacity equals sustainable sales

High capacity and extensive product range offered by our FK-series is the key to customer satisfaction: Cans, Glass bottles and PET-bottles ranging from 0.2 to 2.0 l can be dispensed from a single machine.

The right machine size for every requirement

Three different machine sizes offer you the perfect solution for any location. Cabinets come in different widths and depths and doors are available in different styles to accommodate your product range perfectly.

Flexibility to suit any location

Our flexible, single chute system enables standard and narrow chutes to be combined. Depending on machine model, products can be stacked single depth up to four deep. To ensure ideal capacities for primary and secondary brands, standard and narrow chutes can be combined in the same machine and chutes can be easily and quickly adapted to suit a new site or product range.

Many variations: always attractively designed

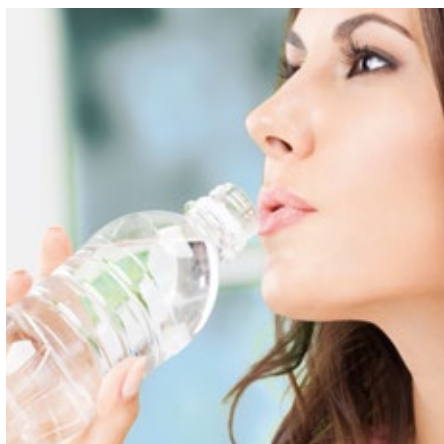
Three door options are available in the FK series. These range from flat door, illuminated or non-illuminated – whichever design is best for you – will have certain appeal.

Efficient refrigeration saves energy

The compact, low-maintenance, high performance – push in chiller unit reliably monitors the internal temperature and cools to the lower setting. As the products are dispensed lowest first, they are always delivered at the ideal temperature. All of our machines save energy by dispensing products in this way.

Individuality and success

Choose your cabinet colour or poster design, with or without lighting: Give yourself the competitive edge with the individuality and variety of our FK-range of machines. There is a model to promote success on any site.



FK Series: simply refreshingly successful



Narrow and standard chutes are combined to offer the best product diversity



Maximum capacity and excellent product delivery

Talent and Technology

General Information

- For the dispense of glass bottles, PET-bottles and cans
- Available in different sizes: FK 185, FK 230, FK 320
- Different door designs available
- Suitable for a vending line
- Modular design – for easy servicing and recycling
- Standard and narrow chutes can be combined for drink sizes ranging from 0.2 to 2.0 l (depends on machine type)
- Capacity depending on machine type and packaging:
 - 6 to 10 different selections
 - Products can be stacked from one to four deep

Chutes

- Depending on machine type 6 to 10 chutes
- Depending on length, products can be stored multi-depth in the chutes
- Flexible Sielaff chute system: standard and narrow chutes can be freely combined

Narrow chute:

- For products up to 0.5 l depending on product diameter
- Chute width 85 to 95 mm

Deep machines:

- For products up to 1.5 l depending on product diameter
- Chute width 110 mm

Standard chute:

- For products up to 2.0 l
- Chute width depends on the product diameter

Energy

- Chiller and lighting are freely-programmable
- Energy saving mode for reduced energy consumption at weekends by raising the temperature and switching off lighting
- Special seal on internal door
- LED-illumination

Payment Systems

- Prepared for the installation of standard MDB-payment systems – BDV or Executive available as an option

Cooling

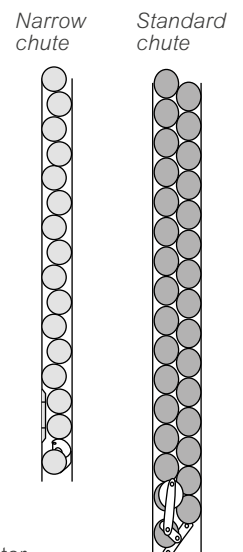
- Low-maintenance, hermetically closed cooling system with flexible high-performance push-in chiller
- HC refrigerant R290 with a GWP of 3
- Chosen temperature applies to all chutes
- Various levels of cooling for different climate classes and requirements available as an option

Technology

- Sales / Service data comply with EVA-DTA standard and can be read-out via telemetry, MDB-connection or infra-red

Chutes

Flat machines Single depth and up to 2 deep product storage possible	CV	EB	RB	RS
FK 185	X	X	X	X
FK 230	X	X	X	
Deep machines Double depth and up to 4 deep product storage possible	EB		RB	
FK 320	X		X	



Door styles

- CV: flat door, without illumination
- EB: flat door with operator panel in stainless steel, illuminated poster
- RB: flat door with operator panel in door colour (RAL), illuminated poster
- RS: Flat door with SiLine matching design, illuminated poster, decor plate at door bottom in stainless steel, optional LED decor strips



FK 185 CV



FK 185 EB



FK 185 RB



FK 185 RS VA

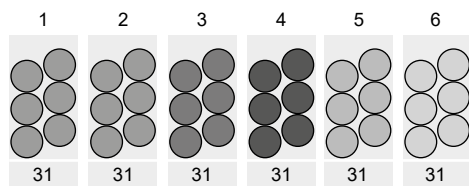


FK 230 EB



FK 320 RB

Layout examples



No. of selection



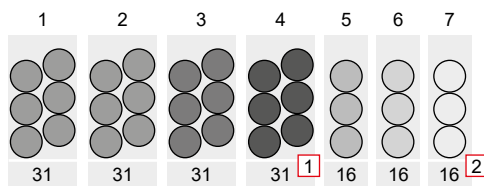
Standard layout (FK 185)

Standard chutes only

Total: 186 products

Housing width 850 mm

No. of 0.5 l PET chutes (Ø 65 mm)



No. of selection



Customised layout (FK 185)

Combination of standard and narrow chutes

Total: 172 products

Housing width 850 mm

No. of 0.5 l PET chutes (Ø 65 mm)

The FK-series with its mix of standard or narrow chute combinations offers excellent variety of products.

1 Ideal capacity of primary, secondary and third most popular drinks as well as further brands

2 Additional chute for additional brand

Technical data and stocking information

	FK 185	FK 230	FK 320
Max. no. of selections	8	10	10
No. of chutes as standard	6	8	8
Max. bottle length	295	295	498

Capacities / Chute types

Capacity, Chute type	FK 185				FK 230				FK 320			
	C	SC	NC	S	C	SC	NC	S	C	SC	NC	S
0.33 l standard can	372	6	-	6	496	8	-	8	800*	8	-	8
0.33 l standard can	316	2	6	8	440	4	6	10	768*	3	7	10
0.33 l sleek can	210	6	-	6	280	8	-	8	496	8	-	8
0.33 l sleek can	172	2	6	8	242	4	6	10	522	3	7	10
0.25 l slim can	456	6	-	6	608	8	-	8	510	-	10	10
0.25 l slim can	380	2	6	8	532	4	6	10	510	-	10	10
0.5 l PET	186	6	-	6	248	8	-	8	416	7	1	8
0.5 l PET	172	4	3	7	234	6	3	9	364	3	7	10

C = Capacity, SC = Standard chute, NC = Narrow chute, S = Selections

(*) Capacity when special chutes are used

Options/High Security overview

FK type	185				230			320	
Options/Model	CV	EB	RB	RS	CV	EB	RB	EB	RB
Anti-theft protection with side lock		X	X			X	X	X	X
Ingress protection	X	X	X	X	X	X	X	X	X
Cashbox protection	X	X	X	X	X	X	X	X	X
Coin insert slide and change drum.		X	X	X		X	X	X	X
Metal keypad and refund button		X	X	Std		X	X	X	X

std = standard, x = available as an option



Housing available in jet black (RAL 9005), white aluminium (RAL 9006) and pure white (RAL 9010)

Design variants FK 185 RS

with lower door decor plate in RAL or stainless steel, LED-strips available as an option. Fits perfectly into a SiLine vending bench.

Dimensions

- 1,830 x 850 x 675 mm (height x width x depth)*



FK 185 CV, EB, RB, RS Dimensions

- 1,830 x 850 x 670 (RS 675) mm (height x width x depth)*

Weight

- CV: 265 kg
- EB: 268 kg
- RS: 294 kg (empty weight, depends on layout)

Electrical data

- 220–230V/50/60 Hz/min. 10 A

Power usage

- 300 W (varies depending on chiller unit)

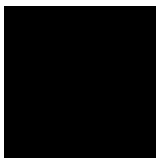
Energy consumption labelling

- in accordance with regulation (EU) 2019/2018 DIN 50597:2018 HC refrigerant R-290 Energy efficiency category C



Energy efficiency for all machine types can be found under www.sielaff.de/en/products/vending-machines/energy-consumption-labelling

* Machine dimensions may vary due to add-on parts and accessories



Housing available in
pure white (RAL 9010),
white aluminium (RAL 9006)
and jet black (RAL 9005)



FK 230 CV, EB, RB Dimensions

- 1,830 x 1,120 x 670 mm
(height x width x depth)*

Weight

- CV: 351 kg
EB: 318 kg
(empty weight, depends on layout)

Electrical data

- 220–230V/50/60 Hz/min. 10 A

Power usage

- 470 W
(varies depending on chiller unit)

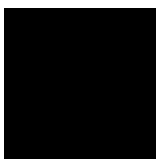
Energy consumption labelling

- in accordance with regulation
(EU) 2019/2018 DIN 50597:2018
HC refrigerant R-290
Energy efficiency category C



Energy efficiency for all machine types
can be found under
www.sielaff.de/en/products/vending-machines/energy-consumption-labelling

* Machine dimensions may
vary due to add-on parts
and accessories



Housing available in
pure white (RAL 9010),
white aluminium (RAL 9006)
and jet black (RAL 9005)



FK 320 EB, RB

Dimensions

- 1,830 x 1,120 x 880 mm
(height x width x depth)*

Weight

- 495 kg
(empty weight, depends on layout)

Electrical data

- 220–230 V / 50/60 Hz / mind. 10 A

Power usage

- 690 W
(varies depending on chiller unit)

Energy consumption labelling

- in accordance with regulation
(EU) 2019/2018 DIN 50597:2018
HC refrigerant R-290
Energy efficiency category C



Energy efficiency for all machine types
can be found under
www.sielaff.de/en/products/vending-machines/energy-consumption-labelling

* Machine dimensions may
vary due to add-on parts
and accessories



Sielaff GmbH & Co. KG
Automatenbau Herrieden
Münchener Str. 20
91567 Herrieden
Germany

Telephone: +49 9825 18-0
Telefax: +49 9825 18-311155
export@sielaff.de
www.sielaff.com

**See here for our
company profile video**



■ MADE
■ IN
■ GERMANY